

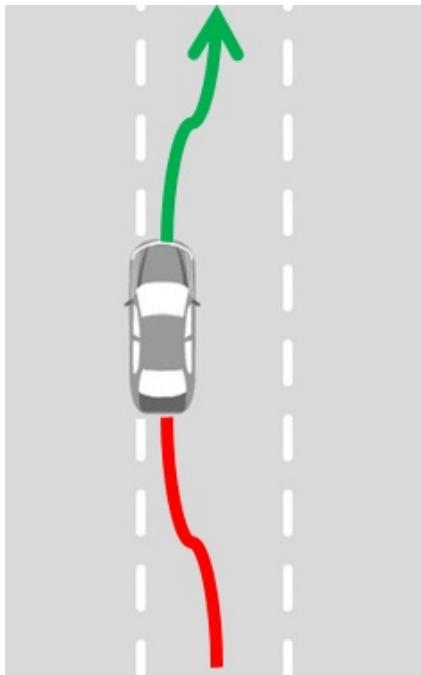
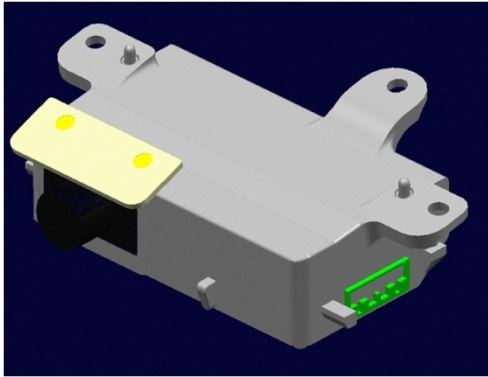


Vision Technology

Camera based detection technology combining all hardware and processing into one compact unit.

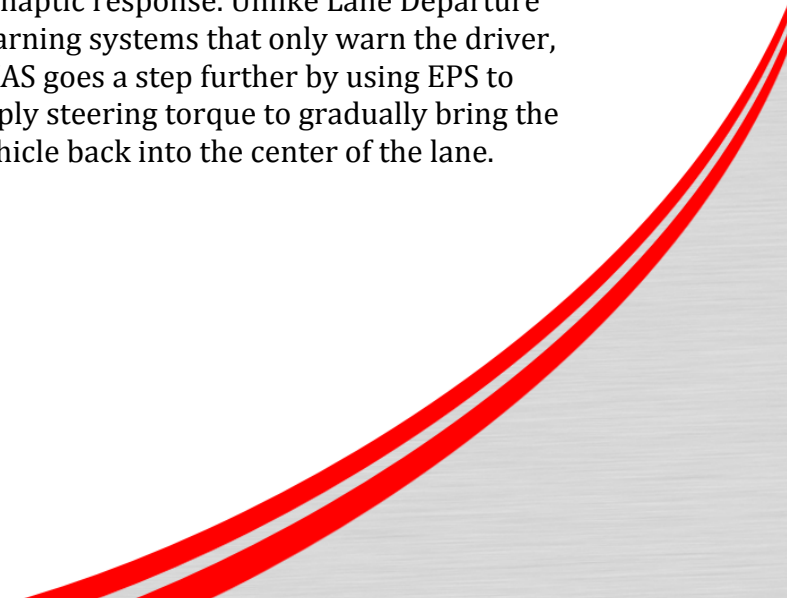
Monocular Camera

By integrating the camera and ECU into 1 box we are able to conserve weight and space. This combined with its compact size makes Elesys camera technology easy to configure to any vehicle. By utilizing our own proprietary software and algorithms, this unit provides high performance while maintaining a competitive price with the market.



Lane Keeping Assist

The Elesys Lane Keeping Assist System, or LKAS, integrates our monocular camera technology with our Electronic Power Steering (EPS) ECU for a complete system. The system works by visually detecting the lines in the road. When the camera senses the vehicle drifting toward a lane marker without the use of the indicator, the system will notify the driver with an audible, visual, or haptic response. Unlike Lane Departure Warning systems that only warn the driver, LKAS goes a step further by using EPS to apply steering torque to gradually bring the vehicle back into the center of the lane.



Specifications

- Dimensions: 106 x 62 x 25 (mm)
- Resolution: WVGA (720 x 400)
- Detection Range: 42m

General inquiries

Tomoko Rider
770-904-3445
Tomoko.Rider@elesys-na.com

Sales inquiries

Yasutaka Yamakami
770-904-3428
Yasutaka.Yamakami@elesys-na.com

Technical inquiries

Svet Stoyanov
770-904-3423
Svetoslav.Stoyanov@elesys-na.com

www.elesys-na.com
Elesys North America, Inc.
70 Crestridge Drive, Suite 150
Suwanee, GA 30024
Phone: 770-904-3400
Fax: 770-904-5359

